



**LIBERA
PULLETS**

FACCO
POULTRY EQUIPMENT

LIBERA PULLETS

The LIBERA PULLETS system was designed to meet and train pullets in jumping and flying from their very first days; this will prepare them to be moved to a perchery system in the second phase of their growth. This is to ensure best **uniformity** of the chicks and the **development of their mobility skills**.

Facco is by your side in designing and managing your cage free farm.



LIGHTING SYSTEM

Lighting is a key element as it determines the correct development and influence the sexual maturity of the birds.

The use of LED lamps ensures **optimal regulation** of light intensity in addition to excellent energy savings.

The system, which can be programmed automatically, reproduces the typical day of the chicks, setting a **correct routine** in their life cycle.

Furthermore all movements in the various levels can be taught and controlled in the various phases by use lighting.



LIBERA PULLETS

FEEDING SYSTEM

The module is designed to let the pullets easily and quickly discover feed. A heavy duty chain ensures reliability of the feeding system during the whole cycle. Perches above the feed trough and watering line reduce feed wastage and manure contamination



DRINKING SYSTEM

Discovering quickly water is a **essential feature** for day old birds.

The FACCO drip troughs are functional and precise, guarantee waste-free high water supply performances and are ideal for all types of animals.

The number of Nipples in the unit can be adjusted in relation to the number of animals present in the structure.

Our drinking system lines are completed by:

pressure regulators, a discharge unit with integrated cleaning systems, filters, medication dosing systems, liter-counters and lifting accessories which allow the operator to adjust height according to the growth of the animal and for end-of-cycle cleaning operations.



LIBERA PULLETS

MODULE

The size of “LIBERA Pullets” module allows an easy management of a small group of animals during the vaccination and prevent stress for stacking, ensuring also maximum mobility of the animal inside the module, both in flight from/to outside.

Designed in order to allow easy movement of the birds in each module and optimal accessibility during inspection, maintenance, housing and depopulation. It has been given big care to poultry management, in particular it has been studied a sliding front grid able to satisfy 3 different functions :



- **Close front:** it confine the birds in the module.
- **Half opened front:** the upper front is opened and the lower front is closed. In this configuration the system allows to contain birds and at the same time permit a grater access to the frontal module allowing the personnel to reach birds.
- **Opened front:** easily access of birds to the module.

INTERNAL PERCHES



The strategic locations of the perches allow easy access to the aviary and a good jumping and flying training for pullets since the very first days.

EXTERNAL GRID LEVEL & EXTERNAL PERCHES

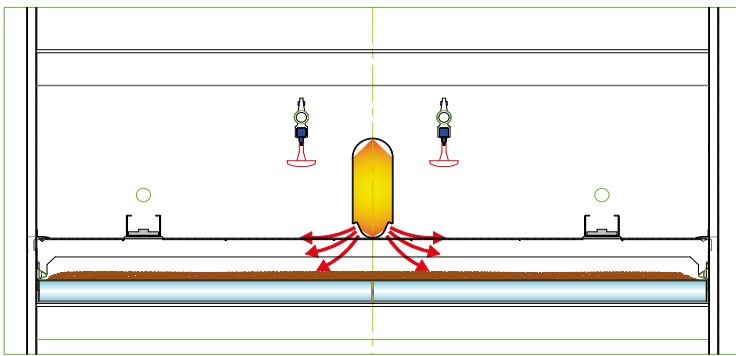
External grid levels allow for free movement (jump/flight) on all floors and between adjacent rows. Built in a robust metallic grid, enable very young pullets (few weeks of age), to find a comfortable wire mesh on wich to begin to move around to reach all levels. Perches of special design allows a proper grip to the birds from the very early stages of rearing.



LIBERA PULLETS

MANURE DRYING

The “LIBERA Pullets” can be provided with the manure drying duct over the manure belt. The scrapers, positioned on the head frame, improve and facilitate the manure removal, avoiding the formation of unpleasant accumulations and carrying out a rapid and effective action up to the most hidden corners.



EASIER MANAGEMENT

The doors dimensions allows an easy movement of the birds inside the modules and greater accessibility during inspection, maintenance, restocking and depopulation.

Before birds housing

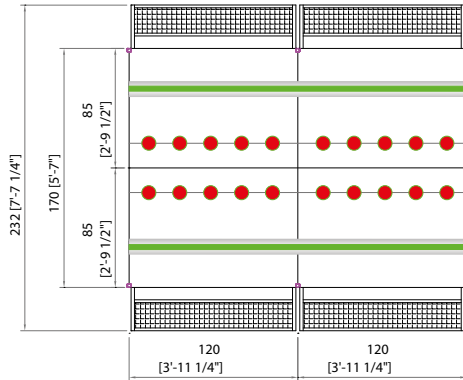


After birds housing

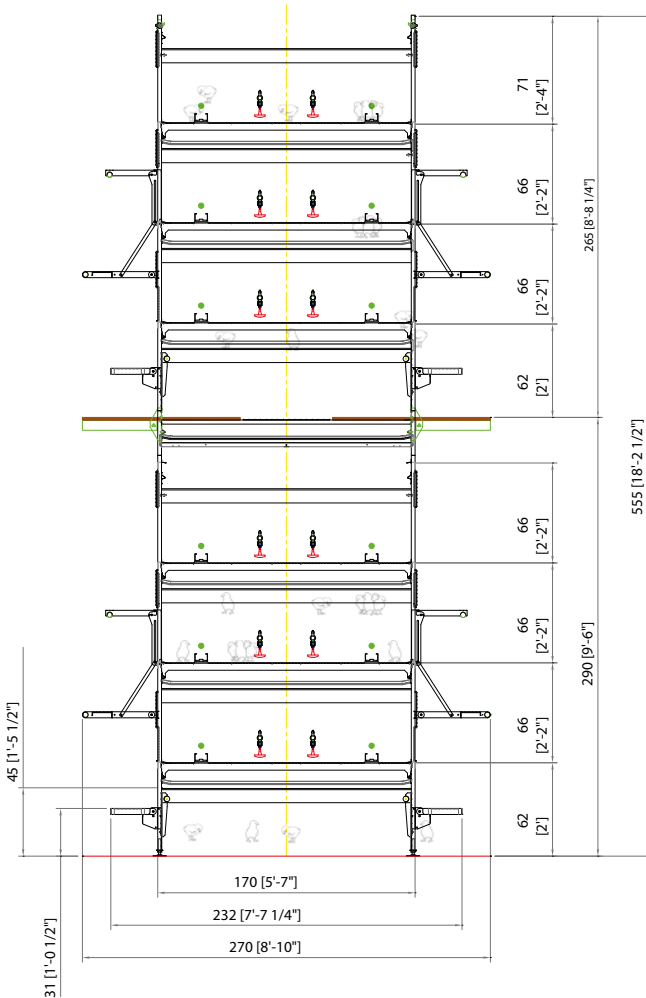


TECHNICAL FEATURES LIBERA PULLETS 66

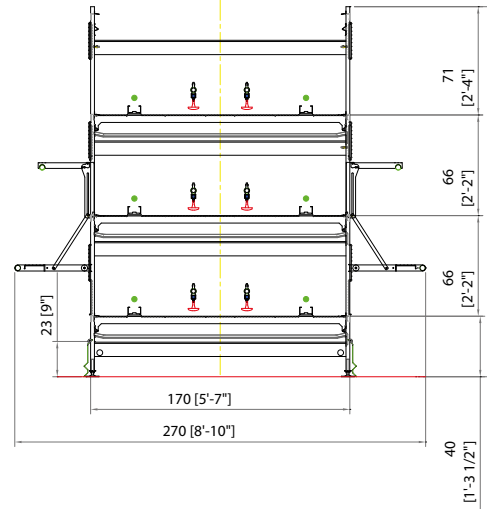
LIBERA PULLETS 66	cm.	in.
MODULE DIMENSION	120x85	47x33,5
HEIGHT EXTERNAL DIMENSION	66	26
LENGHT EXTERNAL DIMENSION	270	106,3
NIPPLES NUMBER	5	5



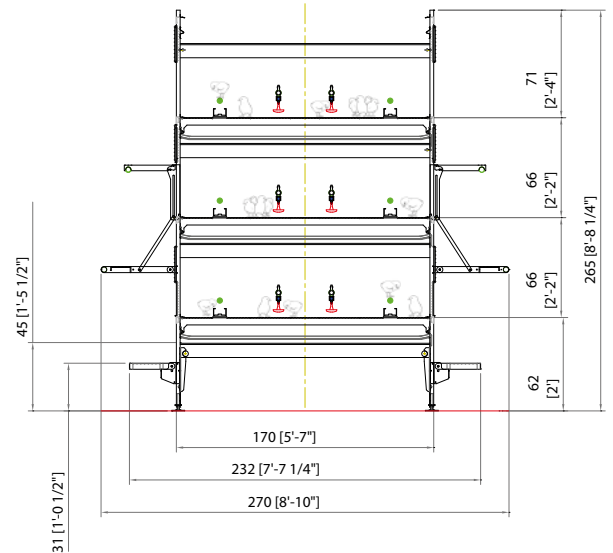
3+3 TIERS VERSION



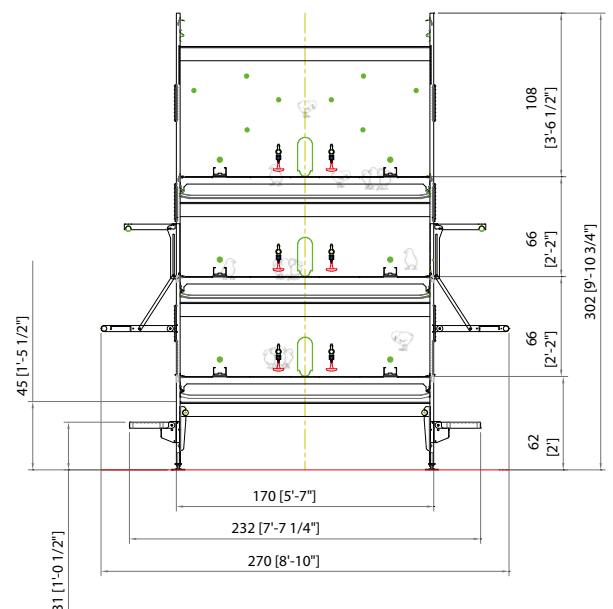
3 TIERS VERSION



3 TIERS RAISED VERSION

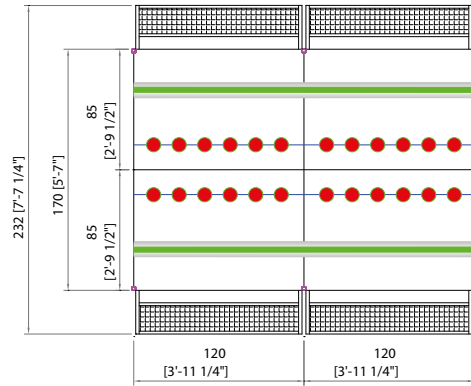


2+1 TIERS VERSION



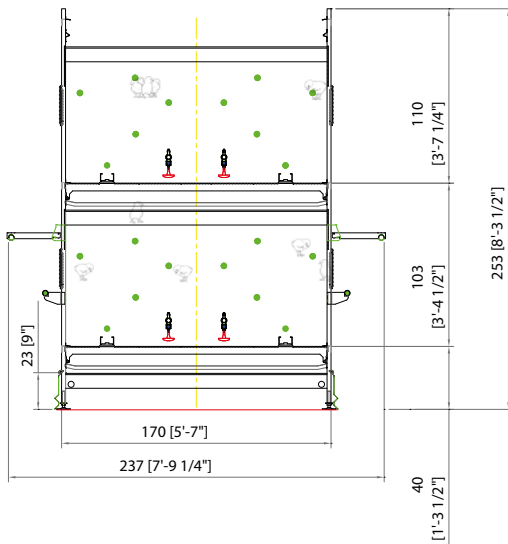
TECHNICAL FEATURES LIBERA PULLETS 103

LIBERA PULLETS 103	cm.	in.
MODULE DIMENSION	120x85	47x33,5
HEIGHT EXTERNAL DIMENSION	103	40,5
LENGHT EXTERNAL DIMENSION	270	106,3
NIPPLES NUMBER	6	6

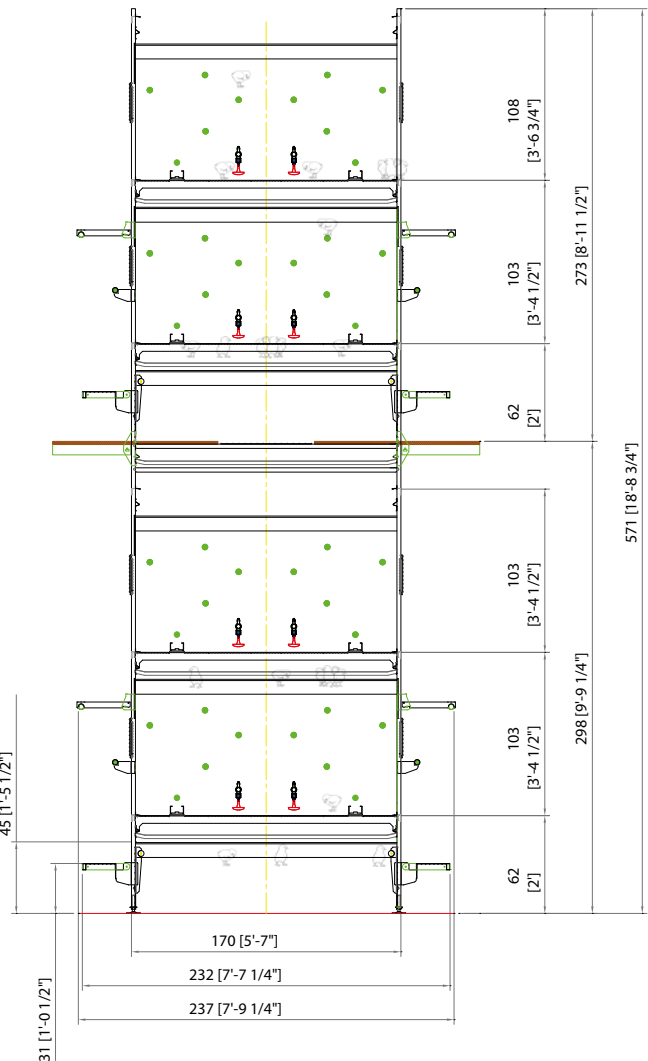


- Key
- PERCHES
 - FEED THROUGH AREA
 - NIPPLES

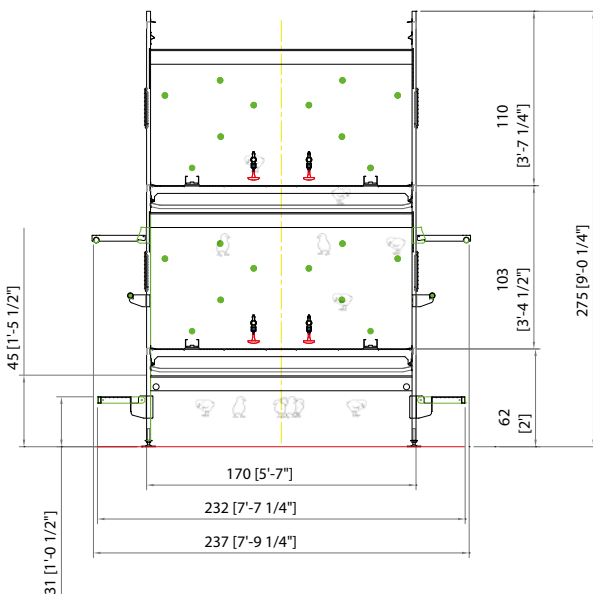
2 TIERS VERSION



2+2 TIERS VERSION



2 TIERS RAISED VERSION





FACCO

POULTRY EQUIPMENT

OFFICINE FACCO & C. S.p.A.

Via Venezia, 30, 35010

Campo San Martino (PD) Italy

Tel. +39 049 9698111

Fax +39 049 9630605

facco@facco.net

www.facco.net

